



RAHSS Winter Newsletter 2024

Welcome to your new RAHSS newsletter, we are aiming to circulate this on a quarterly basis, and include features on key personnel, specific show areas, news on new initiatives, and plans for the 2024 show.

Membership & Premium Parking Renewal DUE NOW!

Payments for membership are due now. This can be done online via our Showing Scene Portal.

www.romseyshow.co.uk/membership

Membership price until 1st May 2024: **£35** (from 1st May 2024: **£40**)

Benefits of membership include:

- To receive a membership badge which provides admission to the Romsey Show (Saturday 14th September 2024) and the Members' Enclosure. The Members' Enclosure includes a bar, café, VIP loos and seating around the Main President's Ring and within the marquee.
- Entitlement to Members' forward parking near the admission gate at the Show.
- The option to purchase guest badges to introduce friends to the members' Enclosure (show admission tickets still required).
- To receive a copy of the Annual Report and Accounts and vote at the Annual General Meeting.
- Attend Society functions including the AGM, Farm Walk and other social events at discounted rates.
- Be entitled to reduced Class entry fees for equine and livestock classes.
- Priority to apply for a Members Premium Parking space (these are strictly limited in number).



Premium Parking price until 1st May 2024: **£35** (from 1st May 2024: **£45**)

Benefits of Premium Parking include:

- Guaranteed reserved parking bay within premium car parking area on show ground.
- Arrange to meet and greet friends / families at your vehicle. Non-members can access the car park on foot from the show ground.
- Generous parking bay with room for picnics at rear of vehicle.
- Adjacent to the Members Area.

- If a member of your party enjoys a “retail “ experience able to easily access your vehicle to store purchases
- Worried about the weather? No problem bring as much alternative clothing / footwear as you want.
- Dedicated Premium Parking show ground vehicle entrance / exit, which allows for easy exit from Broadlands.

Please note: No vehicle movement is permitted between 11am – 3pm.

Vehicles are restricted to cars and 4 x 4s.

All vehicle occupants will be required to have valid show ground entry tickets

The Society Chairman

Ruth Harper Adams retired as chairman at the end of 2023, and Norton Welch, who was vice chairman, has been elected The Society chairman for a 2 year term from January 2024. We thank Ruth for her commitment and leadership over the last two years. Sharon Hillman has been elected as Vice Chairman.

The 2023 Show

As you are probably well aware the 2023 show took place at the end of a tropical heat wave, everybody involved with the set up worked extremely hard with a cheerful positive attitude, despite the heat, and we are grateful for everybody’s input.

For those that attended the show we hope that you enjoyed the day, unfortunately due to advice from our vets’ we had to cancel all dog events, and advised people not to bring their dogs to the show. This combined with the tropical heat wave saw the attendance dip, and whilst costs were kept under budget, unfortunately the show’s income suffered a significant loss for the year. Full accounts have been published in advance of the 2024 AGM which is on March 7th at Romsey Town Hall commencing at 7pm.



2024 Show Day - Saturday 14th September

The main theme of the 2024 show will be a commemoration and celebration of the 80th anniversary of D Day focusing on the considerable role that Hampshire played in the preparations. We have enlisted the assistance of Chris Barrington Brown, a local military historian, who has a particular interest in this area. He is organizing a marquee with exhibitions from a selection of local relevant organisations. Further details are



still being finalized, and the next newsletter will carry additional details. We are asking for family recollections from D Day, in the Chairman’s case his mother used to reminisce on the American troops with their equipment in Michelmersh Woods. In truth he thinks that as a 19 year old Land Army girl on her horse with her friend she used to flirt with them. In later life she often used to wonder what happened to them. If any past generations (or present) have any D Day stories we would love to hear them, and hopefully create a memory wall.

The show will continue to offer all of the traditional attractions including the heavy horse parade, livestock and equine classes and countryside demonstrations as well as other family favourites such as the Sheep Show, forest school and family dog show.

The chairman of the society was heavily involved with Romsey Young Farmers in the 1970s and 1980s. We intend to hold a reunion of “old” Romsey Young Farmers from that era in the Presidents section of the

member's marquee at 3.30 pm on show day. Please spread the word to anyone you know who should be attending. The aim is to have at least 100 "old" (don't like that word as we are not really old!) members attending. If you were involved, please renew your Romsey Show membership hope to see you there.

Can you help the Society?

We would like to improve the disabled access from the main public car park by installing a scaffolding walkway down the bank. Can anyone sponsor the show via a donation for a small amount of scaffolding?

Also we have a need for some audio visual equipment to be used as part of our D Day exhibition. Does anyone have any equipment they could loan us for the day?

If you can help please email us today, sponsorship benefits are available in exchange.

Society Roles

The Society continues to evolve and we offer thanks and appreciation to the following who have stepped down from their positions. MJ Rawson Smith (Horse), Chris Lee (Countryside Ring), Dave Coombs (Traffic), Richard Foord (Farm) and Richard Butler (Treasurer) for their long service and dedication to the society. We hope that they can now enjoy show day without the worry about their individual sections. We welcome Steph Janaway (Horse), Alec Gore (Traffic), Martin Attwell (Farm), and Dan Hallett (Treasurer) to their new roles.

Whilst on the subject of volunteers we are always looking for new volunteers, we have a role for all skills, either to assist with set up and take down of the show, or to steward on the day. The roles can be hard work and demanding, but also rewarding. Can you spare at least half a day a year to help?

Alexa Morson, Society & Show Secretary

Alexa joined the society at the end of 2015 as Assistant Secretary bringing with her a wealth of office experience but no knowledge of running a show. Her enthusiasm, dedication, quick learning and sparkling personality proved to be a winner when our existing secretary left early 2017 and Alexa was appointed Show Secretary. The majority of "The Romsey Show team" are voluntary, Alexa is one of very few paid members.



Alexa's role covers, liaising with the show committees, booking contractors and traders and dealing with any issues they may have, running the office, liaising with the health and safety officer of the Society, keeping up to date with show trends by attending ASAO meetings and conferences, running the Society membership, contacting sponsors and looking for new ones, appointing and working with Show stewards and show advertising and marketing, including social media.

Alexa lives in Salisbury with her husband and two young sons. Any spare time she has is spent enjoying quality time with her family which includes her parents on their smallholding.

Alexa feels that with changes in peoples lifestyles there isn't the time to volunteer to help at local events and Romsey Show is experiencing a drop in volunteer stewards. She would urge anybody with an interest in the local community to consider volunteering for half a day at their local show.

Junior Ambassador

A new role of Junior Ambassador will be introduced, we are seeking applications from people aged between 18 to 30 who can demonstrate an interest in Romsey Show. We are hoping to make this a prestigious role, and will ask the Ambassador to accompany the president on Show day for an hour or so, attend the President's reception, be a recipient of 2 members tickets and act as an ambassador for the society throughout the year especially to youth groups. Applications to [info @romseyshow.co.uk](mailto:info@romseyshow.co.uk) please.

An Insight Into The Food Zone - by Judith Long, Chief Steward of the Food Zone



Many years ago Romsey Show was in the forefront of promoting local produce with its Hampshire Harvest tent. John Robinson, THE butcher from Stockbridge, Hockey's Farm Shop in Gorley and Ivor and Rod Nobles Sunbeam Watercress from Sherfield English were some of the ten or twelve producers who exhibited on a regular basis. Over time this evolved into The Food Zone which now incorporates the Skills Kitchen run by Hampshire Fare, a large picnic area, public catering vendors, the Performance Stage managed by Romsey's Beggars Fair, the Honey Tent organised by Romsey and District Beekeepers and the stunning Floral Art competition displays presided over by Maureen Lawes.

Over the years we have seen many traders come and go. Fortunately we have many regulars who have been coming back year after year, hopefully this means we must be doing something right! Each year some producers don't return but new ones pop up to replace them. Pre-covid we had 80-90 Food Zone exhibitors each year, at our first post-covid show in 2022 only 42! 2023 saw this increase to 55 so fingers crossed! The Covid pandemic saw many small food traders go out of business, some saw an opportunity to retire, others just couldn't survive whilst many realised that it was far easier to trade online than stand outside in all weathers at markets and shows and possibly make a profit.

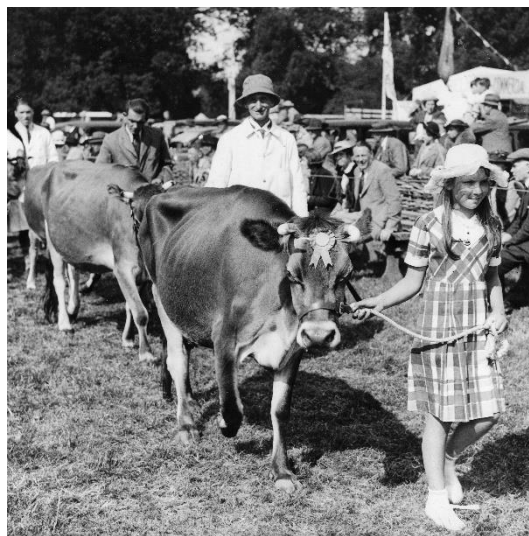
Every year, once the majority of applications are in the all-important plotting starts. I'm not ashamed to say that I am far more comfortable with paper and pencil rather than a computer when I'm creating the plan of the Food Zone. It is very important to look after our traders and The Romsey Show has a very good reputation which means word is passed around that we are treat our exhibitors well. If we didn't restrict the number of exhibitors selling similar products we would fill up with gin and fudge stalls which would not make our public or stallholders very happy! Several years ago we used to limit cheese traders to four or five, however in more recent years some regional cheese producers have ceased trading but we are fortunate to still have our local Lyburn Cheese returning.

Plotting involves keeping similar products apart, placing traders in the same position as last year or moving them to another depending on their preference, putting friends next to each other and the hardest request of all to satisfy – keeping pitches away from the sun (which I am sure you all realise moves during the day!!!). Pegging out and labelling takes place in the week prior to the show and traders start arriving on Friday and very early on show day. Having settled them all in, helped them move stock and dealt with the 'I don't like it here, can I move requests' (very unlikely but we try!) our wonderful team of stewards look after

our traders throughout the day covering loo breaks and collecting coffees for those on their own and helping them pack up at 6pm. Our stewards (who incidentally, along with every other steward on the showground, are all volunteers) clear litter, keep the picnic tables clean, help the public, deal with 'incidents' and keep smiling. If you would like to join this wonderful team please let us know!

History of the Show

The first record of The Romsey Show was on 21st December 1840 recorded in the Hampshire Chronicle. This was a winter cattle market and held in the town's market place. Our first event held on paid rented land from Broadlands, by the kind permission of Colonel Wilfred Ashley MP, 1st Baron Mount Temple, was when we formed Romsey Agricultural and Horse Show Society in 1919. Since this date we have been lucky enough to be able to pay Broadlands for renting their land every year, with just an eight year break from 1939 to 1947 owing to the second world war, one cancellation in 1952 owing to a severe outbreak of foot and mouth disease and, of course, 2020 and 2021 due to the worldwide Covid pandemic.



In the 21st Century, The Romsey Show welcomes over 20,000 visitors each year. With the main aim of showcasing farming, horse breeding, horticulture and forestry to show-goers on the day with also a strong educational focus as the society introduces members of the public to country ways in all their guises.

Thank you for your continued support towards the Society, we couldn't run such a fantastic event without the support of the hundreds of businesses, volunteers and sponsors involved in the Show.

If you have any questions or would like to contribute towards our newsletter, please email info@romseyshow.co.uk. Thank you.